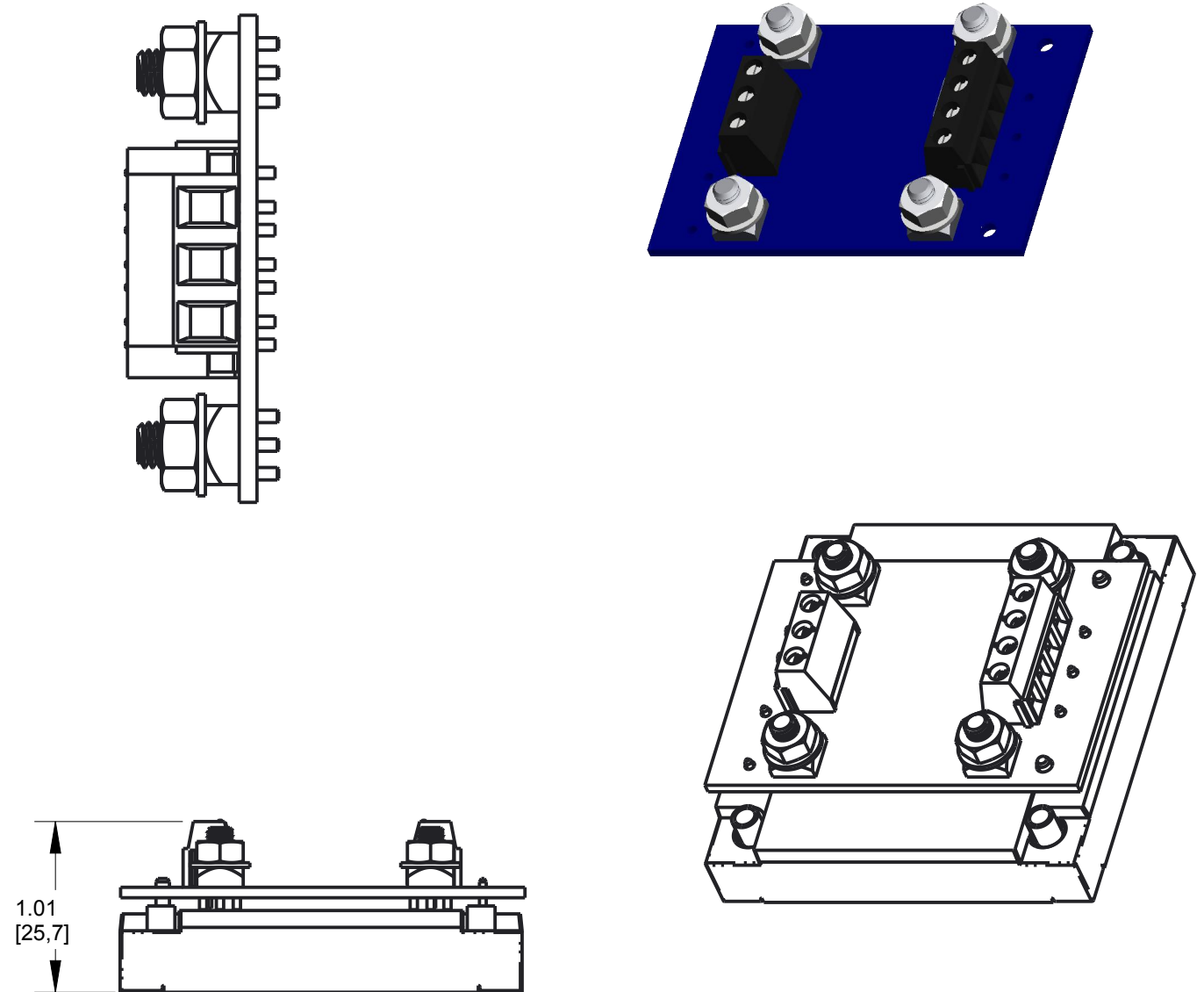
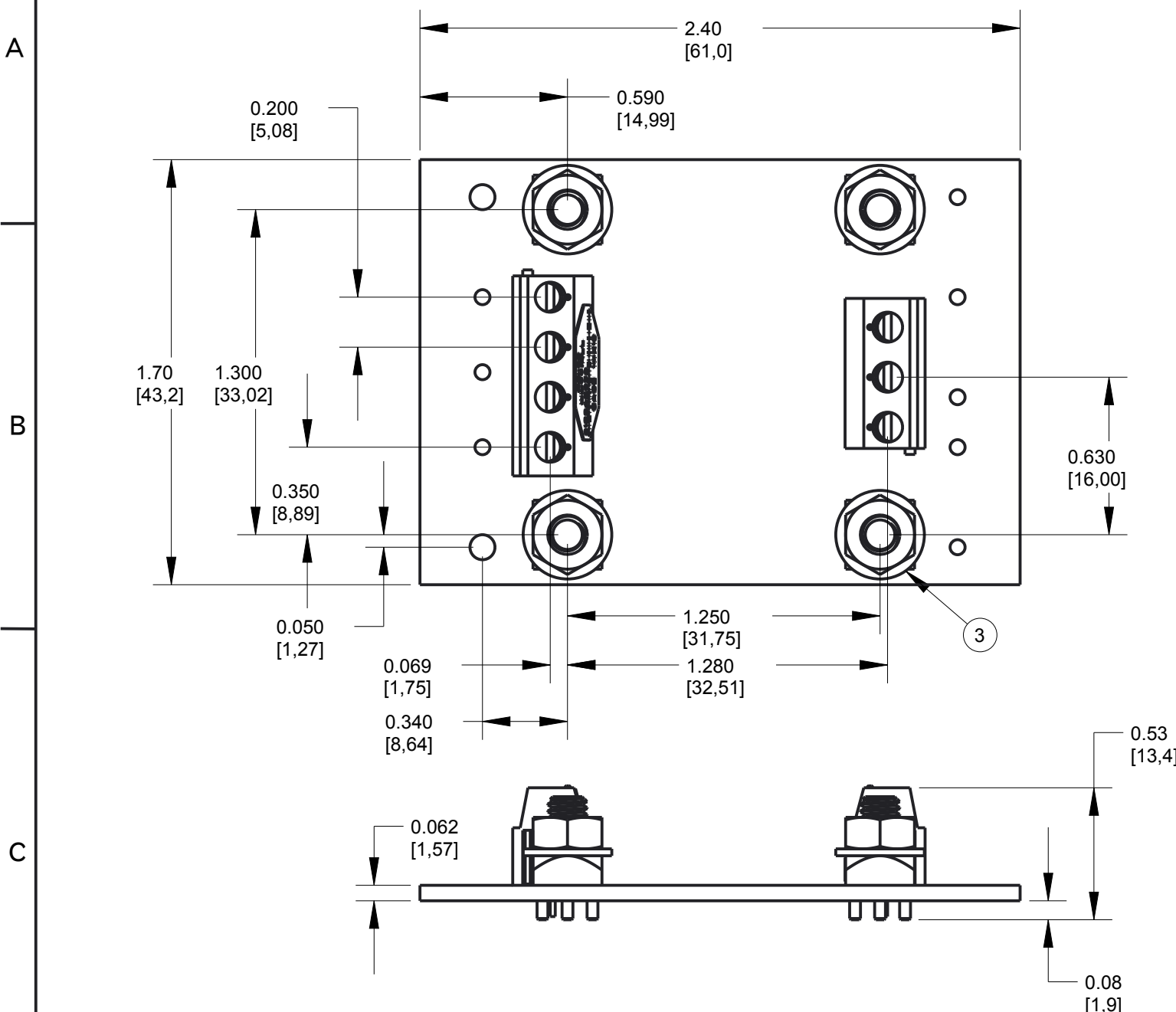


REVISIONS			
REV	DESCRIPTION	DATE	APPROVED
A	INITIAL RELEASE PER ECO 14-18759	092214	DS



- NOTES:
- CONSULT DATASHEET OF THE UNIT THAT THE INTERFACE BOARD IS/WILL BE MOUNTED TO FOR I/O DEFINITIONS, MOUNTING DIMENSIONS AND OPERATING PARAMETERS.
  - ALL DIMENSIONS IN INCHES (MM)  
TOLERANCES: X.XX±.02 IN. (X.X ±.5mm)  
X.XXX±.010 IN. (X.XX ±.25mm)
  - INPUT/OUTPUT POWER TERMINALS: M4 SCREW POST, MAX TORQUE 6 IN-LB (.7Nm).
  - TERMINAL BLOCK: WIRE SIZE 16-30 AWG, 13.5A MAX CURRENT PER TERMINAL, MAX TORQUE 4 IN-LB (.5 Nm)
  - FITS NORMAL, NON-THREADED AND FLANGED HALF BRICKS
  - ADAPTER WEIGHT: TBA

<b>TOLERANCES:</b> Unless otherwise specified: All dimensions in inches .X +/- .025 .XX +/- .010 .XXX +/- .005 Angles +/- 1°					155 Swanson Road Boxborough, MA 01719-1316	
	<b>HBI-05 PFC INTERFACE ASSY.          THROUGH HOLE MOUNTING</b>				SOURCE: PRO/E ASM	
THIS DRAWING IS THE PROPERTY OF SYNQOR LLC. It is not to be reproduced or copied, in whole or in part, or used for furnishing information to others, or for any purpose detrimental to the interests of SynQor. The information shown herein may be protected by patents owned or controlled by SynQor.		SIZE <b>B</b>	DATE <b>092214</b>	DWG. NO. <b>020-0000294</b>	REV <b>A</b>	
SCALE: 1.000		DRAWN: DS	CHECK:	SHEET 1 of 1		