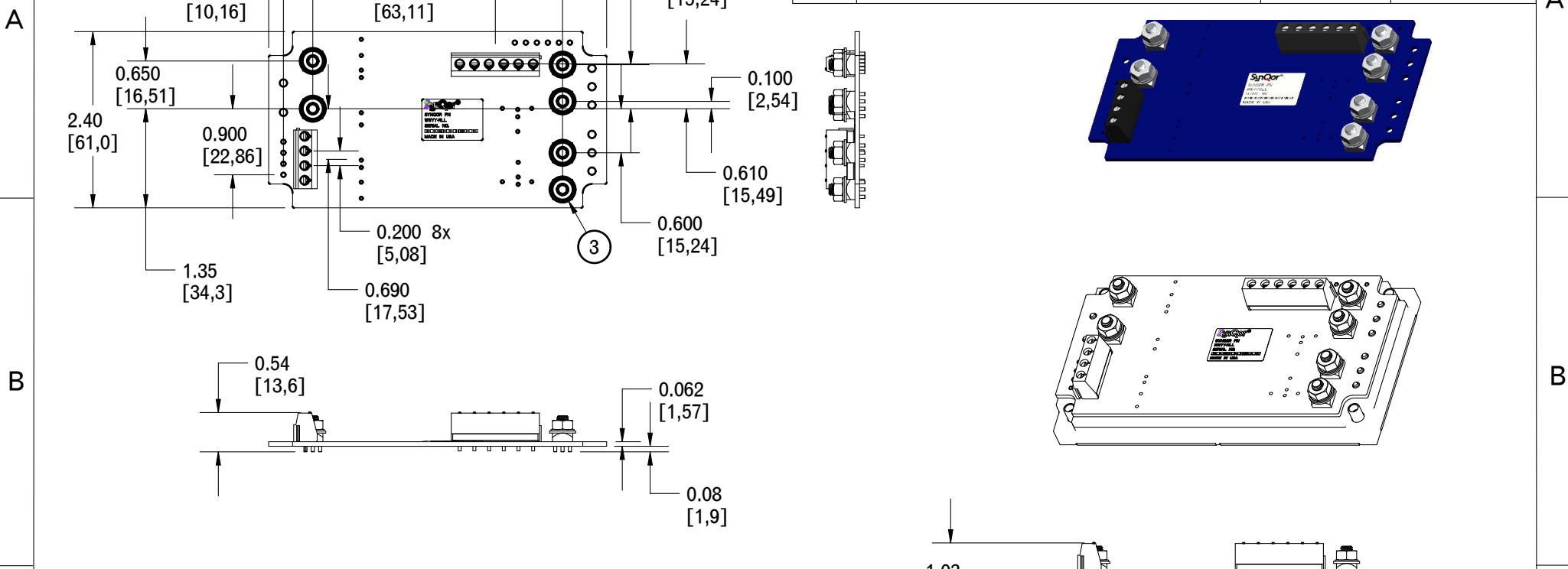


REVISIONS			
REV	DESCRIPTION	DATE	APPROVED
1	INITIAL RELEASE PER ECO 13-17023	083013	L. PITZELE
2	ADDED WEIGHT & CHANGED DESCRIPTION PER ECO 13-17318	103113	L. PITZELE
A	RELEASE TO PROD PER ECO 14-17650	4/7/14	JAK



- NOTES:**
- CONSULT DATASHEET OF THE UNIT THAT THE INTERFACE BOARD IS / WILL BE MOUNTED TO FOR I/O DEFINITIONS, MOUNTING DIMENSIONS AND OPERATING PARAMETERS.
  - ALL DIMENSIONS IN INCHES (MM)  
TOLERANCES: X.XX ± .02 IN. (X.X ± .5mm)  
X.XXX ± .010 IN. (X.XX ± .25mm)
  - INPUT/OUTPUT POWER TERMINALS: M4 SCREW POST, MAX TORQUE 6 IN-LB (.7 Nm).
  - TERMINAL BLOCKS: WIRE SIZE 16-30 AWG, 13.5A MAX CURRENT PER TERMINAL, MAX TORQUE 4 IN-LB (.5 Nm)
  - FITS NORMAL, NON-THREADED AND FLANGED FULL BRICKS
  - ADAPTOR WEIGHT: 1.7 oz (47 g) TYP.

**TOLERANCES:**  
Unless otherwise specified:  
All dimensions in inches  
.X +/- .025  
.XX +/- .010  
.XXX +/- .005  
Angles +/- 1°

THIRD ANGLE PROJECTION

THIS DRAWING IS THE PROPERTY OF SYNQOR INC. It is not to be reproduced or copied, in whole or in part, or used for furnishing information to others, or for any purpose detrimental to the interests of SynQor. The information shown herein may be protected by patents owned or controlled by SynQor.

**SynQor** 155 Swanson Road  
Boxborough, MA 01719

**FBI-00/02 INTERFACE ASSEMBLY  
THROUGH HOLE MOUNTING**

SOURCE: PRO/E 020-0000254

SIZE	DATE	DWG. NO.	REV
A	4/7/14	020-0000254	A
SCALE: .500	DRAWN: LDP	CHECK:	SHEET 1 of 1