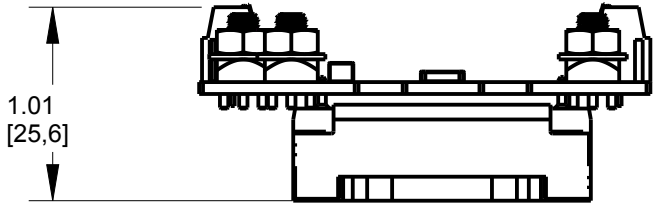
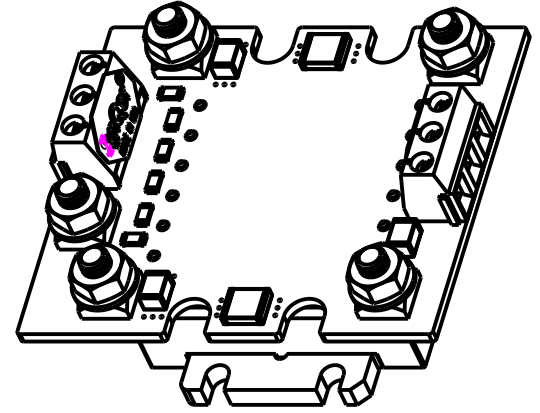
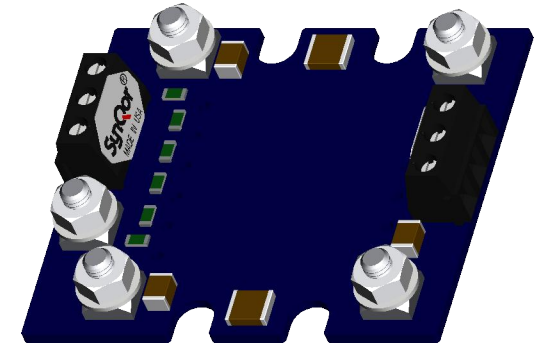
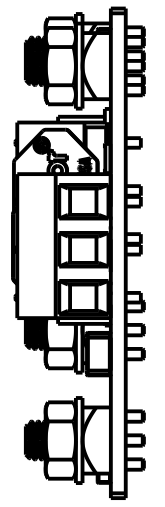
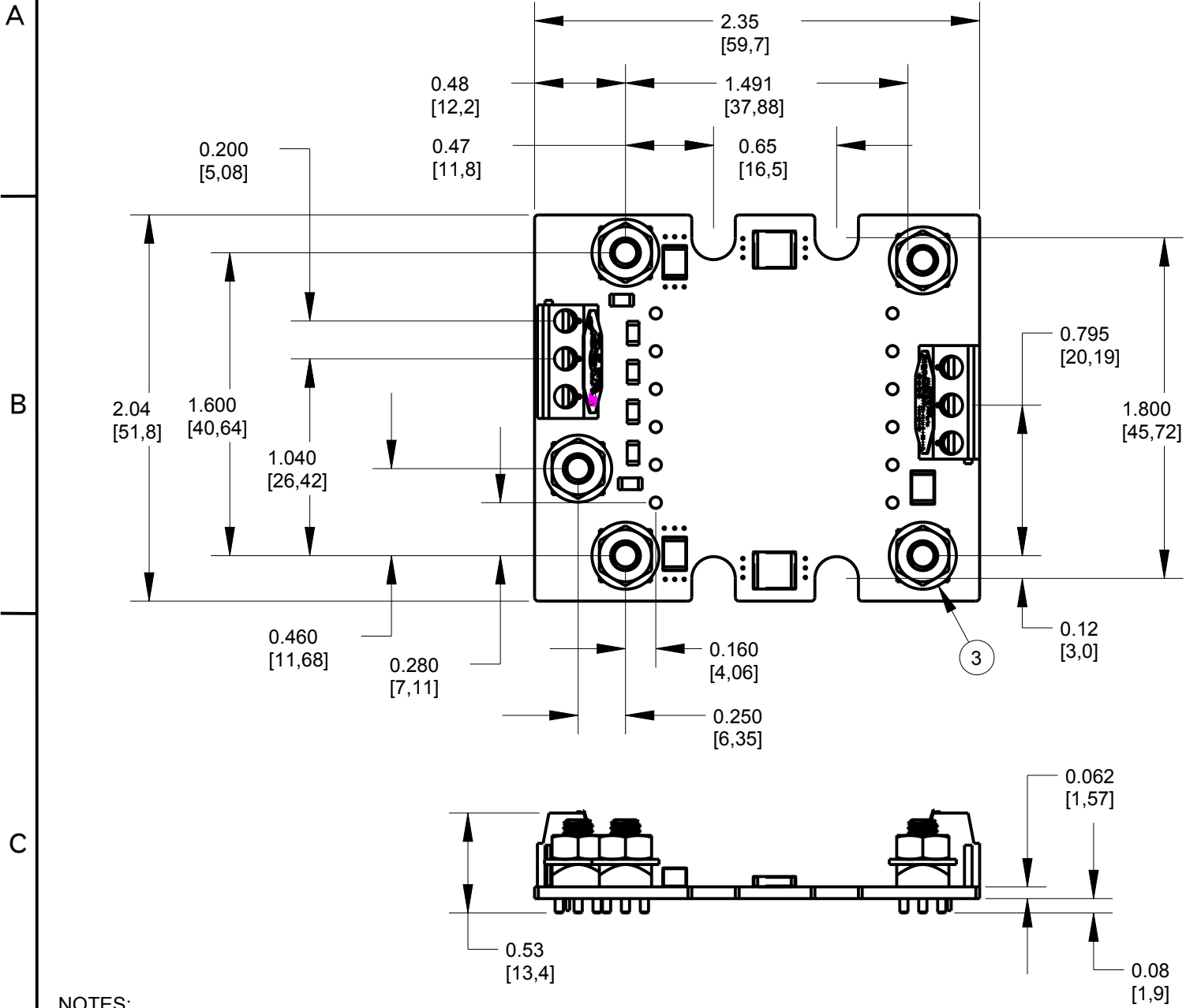


REVISIONS			
REV	DESCRIPTION	DATE	APPROVED
1	INITIAL RELEASE PER ECO 15-19425	030615	DS
A	RELEASE TO PRODUCTION PER ECO 15-20031	7/21/15	DS



- NOTES:
- CONSULT DATASHEET OF THE UNIT THAT THE INTERFACE BOARD IS / WILL BE MOUNTED TO FOR I/O DEFINITIONS, MOUNTING DIMENSIONS AND OPERATING PARAMETERS.
  - ALL DIMENSIONS IN INCHES (MM)  
TOLERANCES:  
X.XX ± .02 IN (X.X ± .5mm)  
X.XXX ± .010 IN (X.XX ± .25mm)
  - Vin/Vout M4 SCREW POST, MAX TORQUE 6 IN-LB (.7Nm).
  - TERMINAL BLOCKS: WIRE SIZE 16-30 AWG, 13.5A MAX CURRENT PER TERMINAL, MAX TORQUE 4 IN-LB (.5 Nm)
  - FITS BOTH NORMAL AND FLANGED DEMI BRICKS
  - ADAPTOR WEIGHT: 0.95 oz (27 G) TYP.

**TOLERANCES:**  
Unless otherwise specified:  
All dimensions in inches  
.X +/- .025  
.XX +/- .010  
.XXX +/- .005  
Angles +/- 1°

Third Angle Projection

THIS DRAWING IS THE PROPERTY OF SYNQOR LLC. It is not to be reproduced or copied, in whole or in part, or used for furnishing information to others, or for any purpose detrimental to the interests of SynQor. The information shown herein may be protected by patents owned or controlled by SynQor.

**SynQor** 155 Swanson Road  
Boxborough, MA 01719-1316

**DBI-00/DBI-03 INTERFACE ASSEMBLY THROUGH HOLE MOUNTING**

SOURCE: PRO/E DBI-00

SIZE	DATE	DWG. NO.	REV
B	030615	020-0000301	A

SCALE: 1.000 DRAWN: DS CHECK: SHEET 1 of 1