

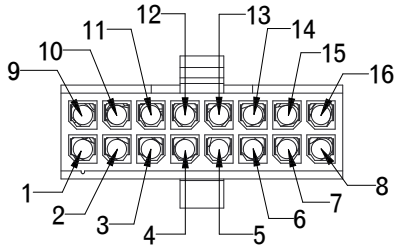
1

2

3

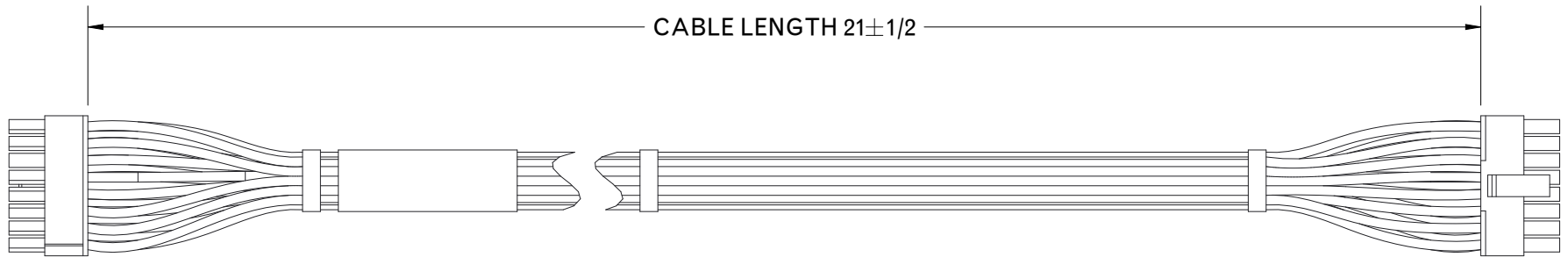
4

## PIN LAYOUT



## REVISIONS

REV	DESCRIPTION	DATE	APPROVED
A	RELEASE TO PROD PER ECO 15-20194	08/31/15	JAK

CABLE LENGTH  $21 \pm 1/2$ 

PIN#	WIRE COLOR	DESCRIPTION
1	VIOLET	FAN_GOOD
2	YELLOW	AC_POWER_GOOD
3	LIGHT BLUE	DC_POWER_GOOD
4	ORANGE	5V_STANDBY
5	RED	Vout+
6	RED	Vout+
7	RED	Vout+
8	RED	Vout+
9	BROWN	RS485_A
10	GREEN	RS485_B
11	WHITE	REMOTE_ENABLE
12	BLACK W/ WHITE STRIPE	Vout- OR 12V STANDBY
13	BLACK	Vout-
14	BLACK	Vout-
15	BLACK	Vout-
16	BLACK	Vout-

## NOTES:

- CABLE KIT INCLUDES:  
ACuQor Eval Cable P/N 705-1000005  
12V ACuQor Eval Cable P/N 705-1000010
- DRAWING IS NOT TO SCALE. USE FOR REFERENCE ONLY

## TOLERANCES:

Unless otherwise specified:  
All dimensions in inches

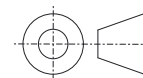
.X +/- .025

.XX +/- .010

.XXX +/- .005

Angles +/- 1°

THIRD ANGLE PROJECTION



THIS DRAWING IS THE PROPERTY OF SYNQOR INC.  
It is not to be reproduced or copied, in whole  
or in part, or used for furnishing information  
to others, or for any purpose detrimental to the  
interests of SynQor. The information shown herein  
may be protected by patents owned or controlled by SynQor.

155 Swanson Road  
Boxborough, MA 01719

## ACuQor Eval Cable Kit

SOURCE: PRO/E REV\_3

SIZE	DATE	DWG. NO.	REV
A	08/31/15	AQ-CBL-OUT2CD	A

SCALE: 0.200 DRAWN: CHECK: SHEET 1 of 2

1

2

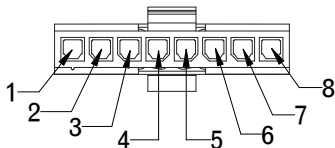
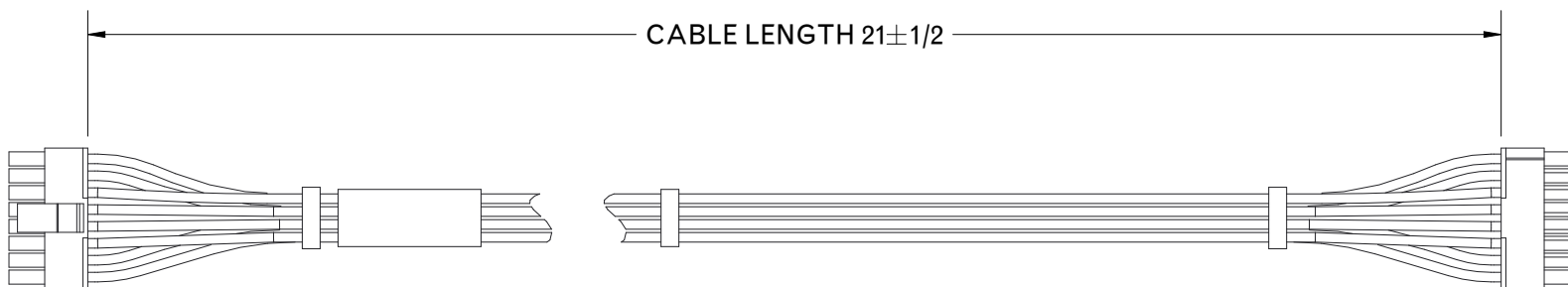
3

4

## REVISIONS

REV	DESCRIPTION	DATE	APPROVED
A	RELEASE TO PROD PER ECO 15-20194	08/31/15	JAK

## PIN LAYOUT

CABLE LENGTH  $21 \pm 1/2$ 

PIN#	WIRE COLOR	DESCRIPTION
1	RED	Vout+
2	RED	Vout+
3	RED	Vout+
4	RED	Vout+
5	BLACK	Vout-
6	BLACK	Vout-
7	BLACK	Vout-
8	BLACK	Vout-

## TOLERANCES:

Unless otherwise specified:  
All dimensions in inches

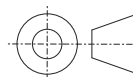
.X +/- .025

.XX +/- .010

.XXX +/- .005

Angles +/- 1°

THIRD ANGLE PROJECTION



THIS DRAWING IS THE PROPERTY OF SYNQOR INC.  
It is not to be reproduced or copied, in whole  
or in part, or used for furnishing information  
to others, or for any purpose detrimental to the  
interests of SynQor. The information shown herein  
may be protected by patents owned or controlled by SynQor.

155 Swanson Road  
Boxborough, MA 01719

## ACuQor Eval Cable Kit

SOURCE: PRO/E OUTPUTCABLE2

SIZE	DATE	DWG. NO.	REV
A	08/31/15	AQ-CBL-OUT2CD	A

SCALE: 0.850

DRAWN:

CHECK:

SHEET 2 of 2

1

2

3

4