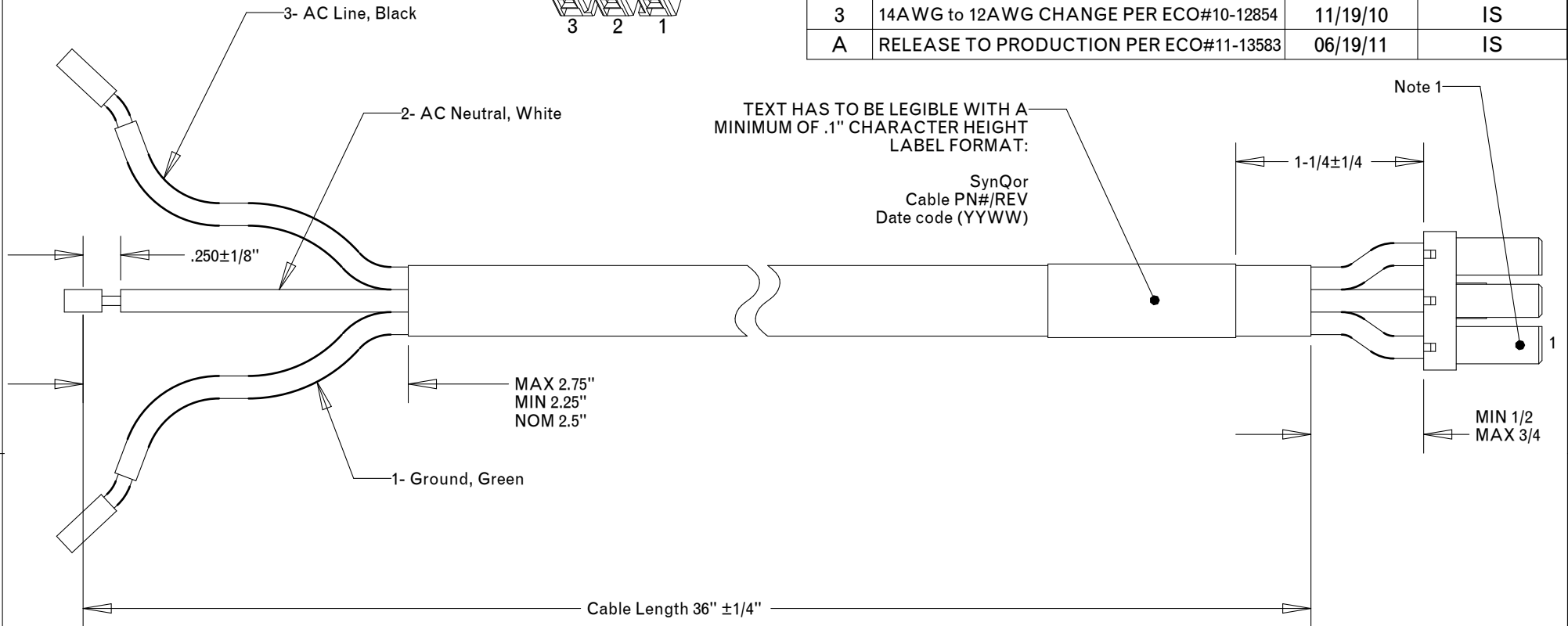
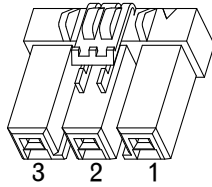


REVISIONS

REV	DESCRIPTION	DATE	APPROVED
1	INITIAL RELEASE PER ECO#08-8746	05/18/08	IS
2	NOTE 3 AND PIN 1 CHANGE PER ECO #10-12831	10/08/09	IS
3	14AWG to 12AWG CHANGE PER ECO#10-12854	11/19/10	IS
A	RELEASE TO PRODUCTION PER ECO#11-13583	06/19/11	IS



NOTES:
 1- USE HIROSE CONNECTOR OR EQUIVALENT: DF22-3S-7.92C WITH HIROSE CRIMP TERMINAL OR EQUIVALENT: DF22A-1012SCF

2- PIN 1 - GROUND - GREEN
 PIN 2 - AC NEUTRAL - WHITE
 PIN 3 - AC LINE - BLACK

3- CABLE: UL RATED, TYPE SJ, 90°C, 12 AWGx3, BLACK
 4- WIRES MUST BE STRIPPED-AND-RETAINED
 5- ALL PARTS MUST BE UL RECOGNIZED AND CSA APPROVED

6- CABLE MANUFACTURER MUST FOLLOW CONNECTOR MANUFACTURER'S CRIMP GUIDELINES.
 7- ALL PARTS/COMPONENTS MUST BE FREE OF DAMAGES, CUTS.

TOLERANCES:

Unless otherwise specified:
 All dimensions in inches
 .XX +/- .01
 .XXX +/- .005
 Angles +/- 1

THIS DRAWING IS THE PROPERTY OF SYNQOR INC. It is not to be reproduced or copied, in whole or in part, or used for furnishing information to others, or for any purpose detrimental to the interests of SynQor. The information shown herein may be protected by patents owned or controlled by SynQor.



155 Swanson Road
 Boxborough, MA 01719

G SERIES ACuQor Input Cable KIT# AQ-CBL-INPUT1CG

SOURCE: 705-1000011

SIZE	DATE	DWG. NO.	REV
A	05/16/08	705-1000011	A
SCALE: 1.000		DRAWN: IS	CHECK: SHEET 1 of 1